

Partner Talk Digital Workshops

Level 1 Workshop

80+ minutes of recorded content

Essential Questions

- Why do partner talk?
- How do we choose partners?
- How often do we change partners?
- What norms do partners need to be taught?
- What roles do we teach partners?
- How should it sound when partners talk to each other?
- How often should they talk?

In this course you will learn the fundamentals to getting partners started in powerful turn and talks.



Level 2 Workshop

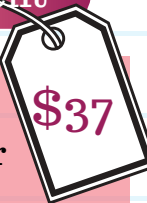
110+ minutes of recorded content

Essential Questions

- What are the essential norms for partner talk?
- How do we get students to have meaningful conversations?
- How do students know what talk moves to use, when to use them, and how to use them?

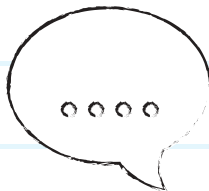
In this course you will explore:

- Getting students to ask questions
- Comparing and noticing when answers are different
- Disagreeing and agreeing meaningfully
- Adding on
- Glowing and Growing



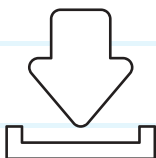
take level 1
then level 2

Everyone
Gets



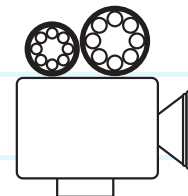
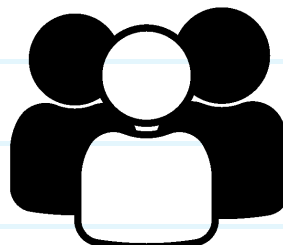
Discussion/ Action Planning Steps
After Each Lesson

Downloadable Workbook,
Checklists, Posters & More



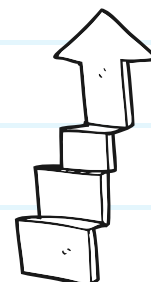
Certificate of Completed Hours

Lesson ideas for launching in
whole group then in partners



Access to Real
Classroom Footage

Step by Step Guide



**Level 1
Course
\$300**

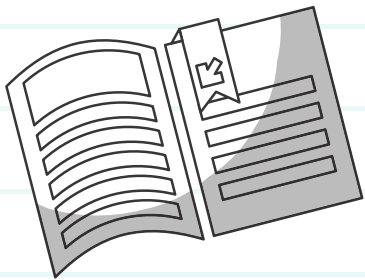
Staff Package

**Level 2
Course
\$500**

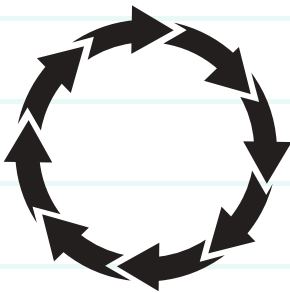
1 login for staff leader- license covers 30 staff members

Course Access for 120 Days

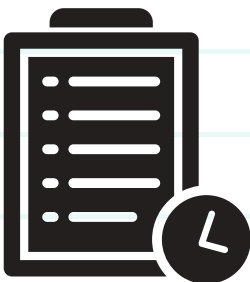
Renew staff access to course (for refreshers, new teacher groups, etc.) for only \$37/year .



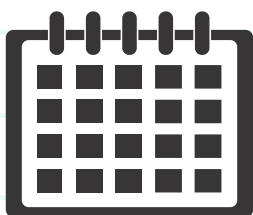
School Leaders Receive A Facilitation Guide that Provides:



A step by step process to sharing the course with staff and making actionable goals



A course outline with needed minutes to view recording, needed minutes for action planning/discussing , needed materials, and facilitation questions.



A worksheet for you and your leadership team to plan out your PD calendar, next steps, and goals.